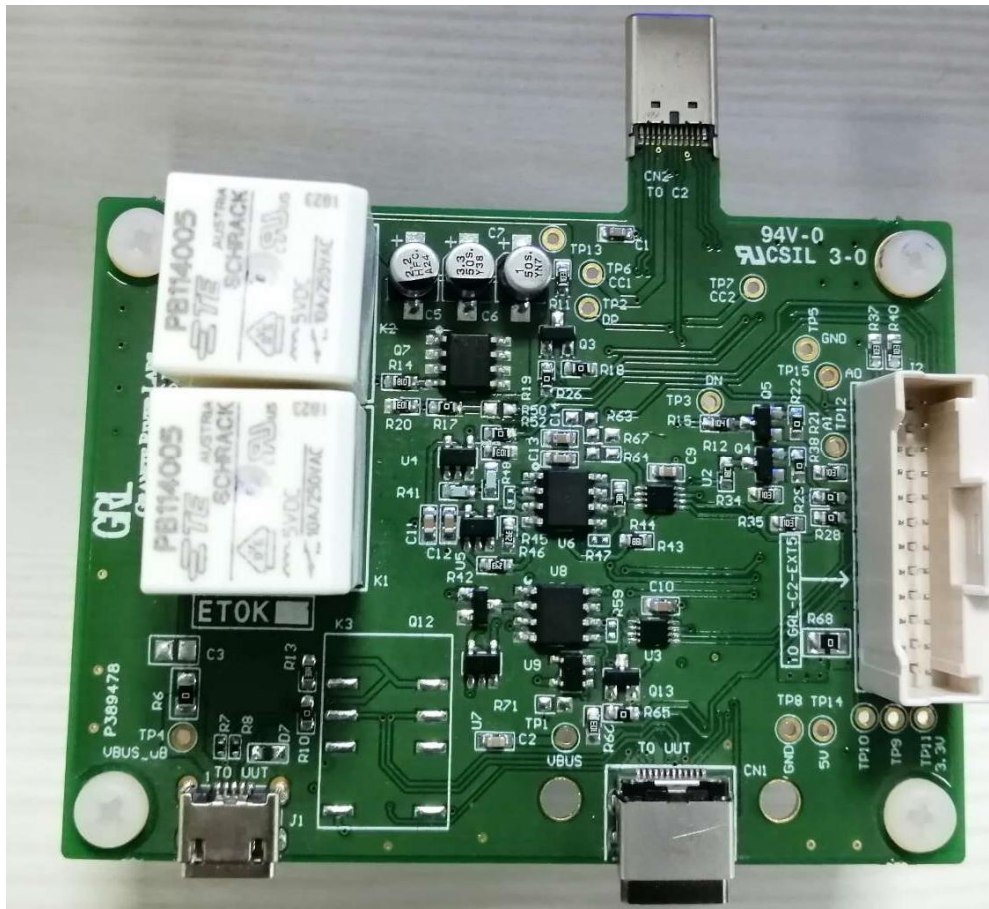


Granite River Labs

Addendum

for Hardware Setup with GRL-USB-PD-BCSINK Fixture Set and GRL USB Type-C Power Delivery Tester and Analyzer (GRL-USB-PD-C2)



This material is provided as a reference to set up the hardware for USB Battery Charging (BC) 1.2 functional testing using the Granite River Labs GRL-USB-PD-BCSINK fixture set and GRL-USB-PD-C2 test controller.

For software support, contact support@graniteriverlabs.com.

TABLE OF CONTENTS

1	SCOPE OF THIS ADDENDUM	3
2	SETUP OF GRL-USB-PD-BCSINK FIXTURE SET	4

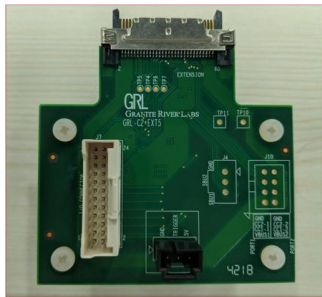
1 Scope of this Addendum

This Addendum serves as the supplementary documentation for how to connect the GRL-USB-PD-BCSINK test fixtures to the GRL-USB-PD-C2 USB Type-C Test Controller for USB BC 1.2 functional compliance testing.

The GRL Battery Charging Sink Testing Accessory Board (GRL-USB-PD-BCSINK) fixture set comprises the following:



- **BC Extension Board** – Extension fixture for GRL-USB-PD-C2 test controller, used to support USB Battery Charging (BC) 1.2-standard Sink test cases.



- **GRL-C2-EXT5 Extension Board** – EXT5 extension fixture for GRL-USB-PD-C2 test controller, used to:
 - Control inputs/outputs from C2.
 - Control the BC Extension Board.



- **F1R-IO-TBT-Cable** – Thunderbolt input/output test cable, used for connecting GRL-C2-EXT5 Extension Board with BC Extension Board.
-

The GRL-USB-PD-BCSINK fixture set supports the following BC 1.2 Sink test cases when used with the GRL-USB-PD-C2 USB Type-C test controller:

- BC.SNK.1 Initial Power-up Test
- BC.SNK.2 DCP Detection Test
- BC.SNK.3 CDP Detection Test
- BC.SNK.4 SDP Detection Test
- BC.SNK.5 QC Negotiation Test

Refer to the GRL-USB-PD-C2 user documentation in <http://graniteriverlabs.com/download-center/> for details on the C2 software and available test cases.

2 Setup of GRL-USB-PD-BCSINK Fixture Set

Below is the procedure to set up and attach the GRL-USB-PD-BCSINK test fixtures to the GRL-USB-PD-C2 controller.

1. Connect both the BC Extension Board and GRL-C2-EXT5 Extension Board using the F1R-IO-TBT-Cable test cable as shown below.



2. Connect both the BC Extension Board to the USB Port of the GRL-USB-PD-C2 controller and the GRL-C2-EXT5 Extension Board to the Extension Port of the GRL-USB-PD-C2 controller as shown.

END_OF_DOCUMENT